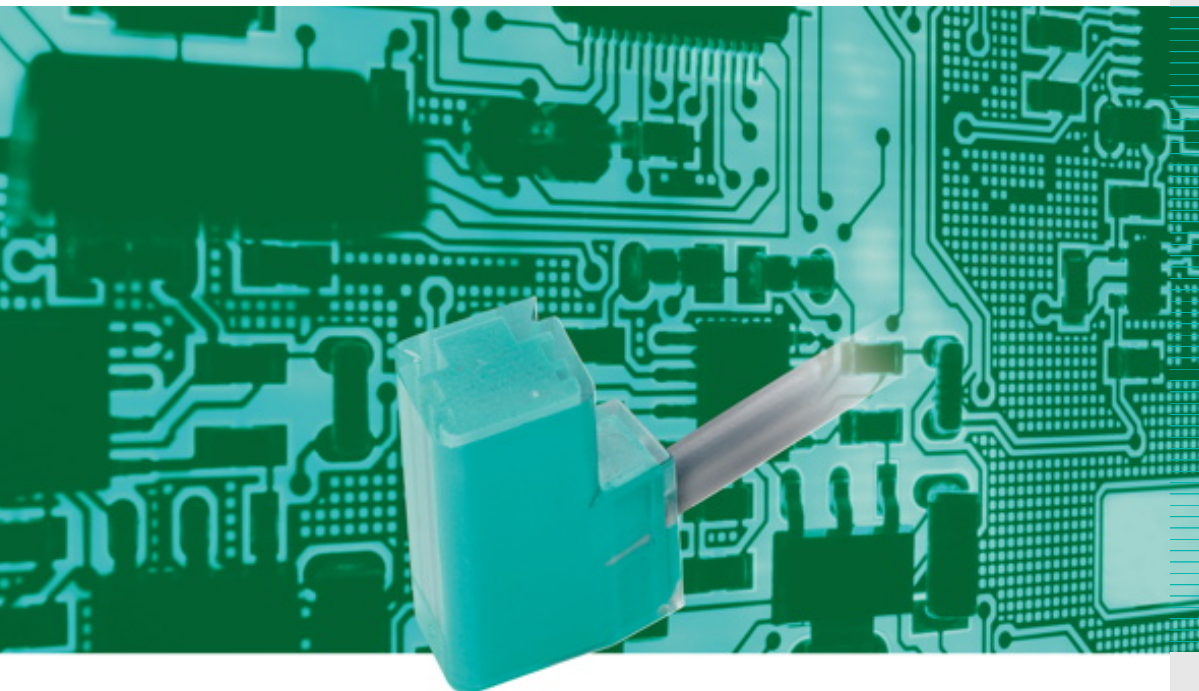


REED SWITCH 570

Elektronic Accessory | Transmitter

DIEHL
Metering



APPLICATION

Generation of a high pulse frequency for electronic processing (e.g. signal converters) as well as remote transmission of analogue flow rate value to display instruments or recorders, pipe leakage monitoring, control of pumps and valves, dosing and measuring heat amounts.

FEATURES

- ▶ Sensor easily replaced without affecting the water meter calibration
- ▶ Two pulses of different values can be tapped off simultaneously
- ▶ Integrated contact protection available on special request

REED SWITCH 570

Elektronic Accessory | Transmitter

FUNCTION

The sensor acts together with the magnet fitted as standard in the counter of the water meter to provide a pulse frequency proportional to the flow. A reed switch is used as sensor and the initiator is an impeller fitted with a magnet, which creates one switching pulse per revolution.

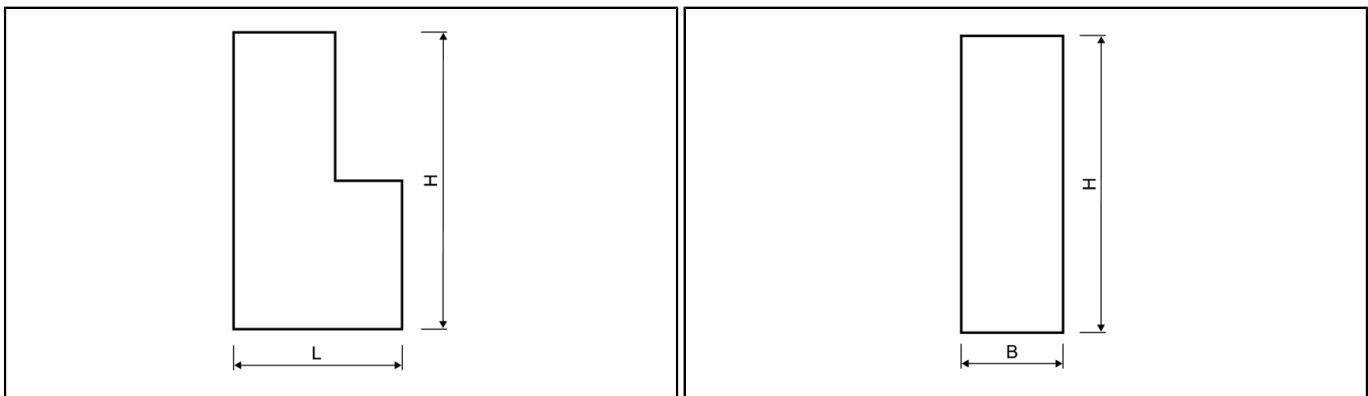
TECHNICAL DATA

REED SWITCH 570	
Version	Reed switch (make) cast in plug
Contact rating	24 V ~, 0.2 A
Cable type	2 x 0.25 mm ²
Cable length	m 2
Cable length (without EMC test)	m Max. 10
Operating temperature	°C -25 ... +90
Storage temperature	°C -40 ... +90
Protection class	IP 68

USABILITY

REED SWITCH 570	
For bulk water meter	WESAN WP 222, WESAN WS 233
Pulse value DN 50 - 125	m ³ /pulse 0.1 / 1
Pulse value DN 150 - 300	m ³ /pulse 1 / 10
Pulse value DN 400 - 500	m ³ /pulse 10 / 100
- - -	- - -
For multi-jet meter	CORONA MC 118
Pulse value Q _n 1.5 - 15	m ³ /pulse 0.1 / 1

DIMENSIONS



REED SWITCH 570			
Length	L	mm	11
Height	H	mm	25
Width	B	mm	9.5

NOTE

- The transmitter must be installed in a certain position. Correct installation = cable downwards!
- Reed switches are not separate electronic devices and therefore do not require CE marking
- Overvoltage protectors are recommended if long connecting cables are used

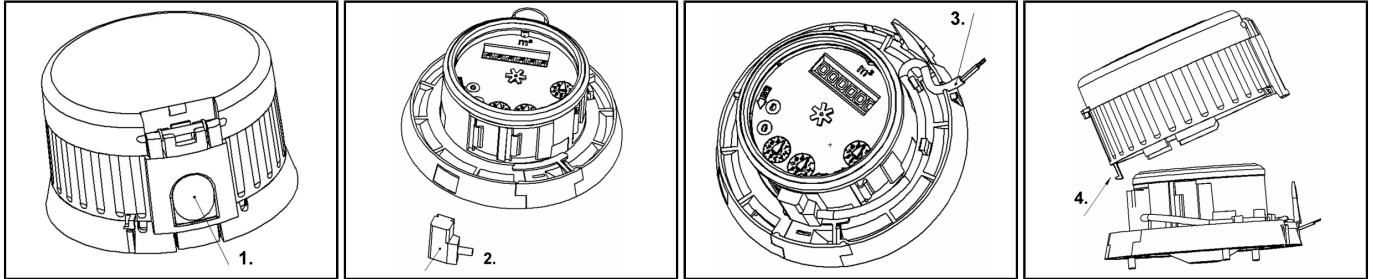
REED SWITCH 570

Elektronic Accessory | Transmitter

ORDER REFERENCES

Type	Standard 30 °C	30 °C	30 °C
Usable for	WESAN WP 222, WESAN WS 233	WESAN WP 222, WESAN WS 233	CORONA MC 118
Counter version	MFD or XK	MFD or XK	Standard
Remark	2 m cable	10 m cable	2 m cable, PG7 connection
Article number	630 061	630 064	570 000 20

INSTALLATION OF TRANSMITTER FOR MFD COUNTER



- Remove protective cover by pressing in the catch (1.).
- Press transmitter (2.) into the desired position on the counter (the pulse sequences can be read off the dial). This is done by pressing the transmitter against the spring and engaging it in position by pressing against the counter.
- Press the transmitter cable between the cams on the cover ring and the counter wall for strain relief purposes.
- Then bring out the cable through the U-shaped cut-out (3.).
- Snap the protective cover into the cover ring with the catch (4.) first.