

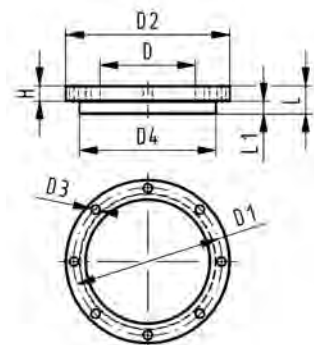
Flanges and Gaskets

The right size for every challenge



Flanges

Blanking flange set PE Combined jointing face flat and serrated metric



Model:

- d63 - d315: backing flange PP-V with end blank PE
- d355 - d630: backing flange PP/Steel with end blank PE
- Connecting dimensions: ISO 7005, EN 1092, DIN 2501
- **Bolt circle PN 10**

AL: number of holes

L: length of the End Blank

d [mm]	DN [mm]	PN [bar]	Code	Weight [kg]
63	50	16	753 700 611	0.674
75	65	16	753 700 612	0.910
90	80	16	753 700 613	0.921
110	100	16	753 700 614	1.158
125	100	16	753 700 615	1.678
140	125	16	753 700 616	1.913
160	150	16	753 700 617	2.373
180	150	16	753 700 618	2.430
200	200	16	753 700 619	3.495
225	200	16	753 700 620	3.744
250	250	16	753 700 621	6.051
280	250	16	753 700 622	6.305
315	300	16	753 700 623	8.894
355	350	16	753 700 624	23.198
400	400	16	753 700 625	30.766
450	500	10	753 700 626	44.271
500	500	10	753 700 627	47.165
560	600	10	753 700 628	67.147
630	600	10	753 700 629	68.574

d [mm]	D [mm]	D1 [mm]	D2 [mm]	D3 [mm]	D4 [mm]	L [mm]	L1 [mm]	H [mm]	AL	SC
63	75	125	165	18	102	30	14	24	4	M16
75	89	145	185	18	122	30	16	26	4	M16
90	105	160	200	18	138	30	17	27	8	M16
110	125	180	220	18	158	30	18	28	8	M16
125	132	180	220	18	158	35	25	28	8	M16
140	155	210	250	18	188	40	25	30	8	M16
160	175	240	285	22	212	40	25	32	8	M20
180	180	240	285	22	212	45	30	32	8	M20
200	232	295	340	22	268	50	32	34	8	M20
225	235	295	340	22	268	50	32	34	8	M20
250	285	350	395	22	320	55	35	38	12	M20
280	291	350	395	22	320	60	35	38	12	M20
315	335	400	445	22	370	65	35	42	12	M20
355	373	460	515	22	430	70	40	40	16	M20
400	427	515	574	26	482	75	46	40	16	M24
450	510	620	684	26	585	80	60	49	20	M24
500	530	620	684	26	585	90	60	49	20	M24
560	615	725	796	30	685	100	60	58	20	M27
630	642	725	796	30	685	110	60	68	20	M27



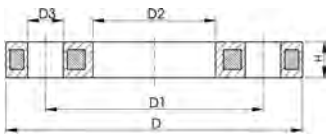
Backing flange PP-Steel For butt fusion systems metric

Model:

- Material: PP (30% glass-fibre reinforced) with steel ring
- UV-resistant. Applicable for outside applications
- Connecting dimension: ISO 7005, EN 1092, BS 4504, DIN 2501
- **Bolt circle PN 10**

AL: number of holes

*Combined version, bolt circle metri - ANSI



	d [mm]	d [inch]	DN [mm]	PN [bar]	Code	Weight [kg]	D [mm]	D1 [mm]	D2 [mm]	D3 [mm]	H [mm]	AL	SC
	20		15	16	727 700 206	0.216	95	65	28	14	12	4	M12
	25		20	16	727 700 207	0.279	105	75	34	14	12	4	M12
	32		25	16	727 700 208	0.429	115	85	42	14	16	4	M12
	40		32	16	727 700 209	0.621	140	100	51	18	16	4	M16
	50		40	16	727 700 210	0.722	150	110	62	18	20	4	M16
	63		50	16	727 700 211	1.084	165	125	78	18	20	4	M16
	75		65	16	727 700 212	1.349	185	145	92	18	20	4	M16
	90		80	16	727 700 313	1.390	200	160	108	18	20	8	M16
	110		100	16	727 700 314	1.407	220	180	128	18	20	8	M16
	125		100	16	727 700 315	1.408	220	180	135	18	20	8	M16
*	140		125	16	727 700 716	2.318	250	210	158	18	26	8	M16
*	160	6	150	16	727 700 717	3.491	285	241	178	22	26	8	M20
*	180		150	16	727 700 718	3.108	285	241	188	22	26	8	M20
*	200	8	200	16	727 700 719	5.600	340	297	235	22	29	8	M20
*	225	8	200	16	727 700 720	5.533	340	297	238	22	29	8	M20
	250		250	16	727 700 721	6.632	395	350	288	22	32	12	M20
	280		250	16	727 700 722	6.573	395	350	294	22	32	12	M20
	315		300	16	727 700 723	7.903	445	400	338	22	36	12	M20
	355		350	16	727 700 724	14.587	515	460	376	23	42	16	M20
	400		400	16	727 700 725	20.034	574	515	430	26	42	16	M24



Profiled backing flange PP-Steel For butt fusion systems metric

Model:

- PP with glass-fibre reinforcement and GGG 50 insert
- UV-resistant. Applicable for outside applications
- Connecting dimensions: ISO 7005, EN 1092, DIN 2501
- **Bolt circle PN 10**

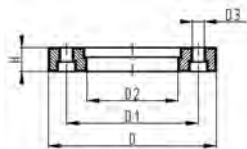
Note:

flat side = bolt side profiled side = flange adaptor side



AL: number of holes

* Galvanized steel, suitable for underground laying



	d [mm]	DN [mm]	PN [bar]	Code	Weight [kg]	D [mm]	D1 [mm]	D2 [mm]	D3 [mm]	H [mm]	AL	SC
*	450	450	10	724 705 026	22.600	615	565	470	26	44	20	M24
	450	500	10	724 700 426	25.600	685	620	517	26	54	20	M24
	500	500	10	724 700 427	21.061	685	620	533	26	54	20	M24
	560	600	10	724 700 428	35.000	796	725	618	30	64	20	M27
	630	600	10	724 700 429	32.500	800	725	645	30	58	20	M27
	710	700	6	724 700 430	25.500	912	840	740	30	49	24	M27
	800	800	6	724 700 431	39.300	1026	950	843	33	58	24	M30
	900	900	6	724 700 432	48.500	1129	1050	947	33	62	28	M30



Profiled backing flange PP-Steel For butt fusion systems metric

Model:

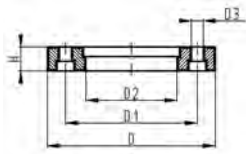
- PP with glass-fibre reinforcement and GGG 50 insert
- UV-resistant. Applicable for outside applications
- Connecting dimensions: ISO 7005, EN 1092, DIN 2501
- **Bolt circle PN 16**

Note:

flat side = bolt side profiled side = flange adaptor side



AL: number of holes



d [mm]	DN [mm]	PN [bar]	Code	Weight [kg]	D [mm]	D1 [mm]	D2 [mm]	D3 [mm]	H [mm]	AL	SC
200	200	16	724 700 319	3.549	344	295	235	22	28	12	M20
225	200	16	724 700 320	3.380	344	295	238	22	28	12	M20
250	250	16	724 700 321	6.390	410	355	288	26	33	12	M24
280	250	16	724 700 322	6.310	410	355	294	26	33	12	M24
315	300	16	724 700 323	9.740	455	410	338	26	40	12	M24
355	350	16	724 700 324	15.203	521	470	376	26	50	16	M24
400	400	16	724 700 325	20.600	582	525	430	30	54	16	M27



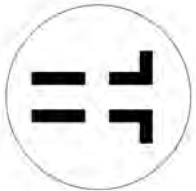
Profiled backing flange PP-Steel For butt fusion systems metric

Model:

- PP with glass-fibre reinforcement and GGG 50 insert
- UV-resistant. Applicable for outside applications
- Connecting dimensions: ISO 7005, EN 1092, DIN 2501
- **Bolt circle PN 10**

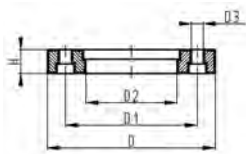
Note:

flat side = bolt side profiled side = flange adaptor side



AL: number of holes

* Galvanized steel, suitable for underground laying



	d [mm]	DN [mm]	PN [bar]	Code	Weight [kg]	D [mm]	D1 [mm]	D2 [mm]	D3 [mm]	H [mm]	AL	SC
*	450	450	10	724 705 026	22.600	615	565	470	26	44	20	M24
	450	500	10	724 700 426	25.600	685	620	517	26	54	20	M24
	500	500	10	724 700 427	21.061	685	620	533	26	54	20	M24
	560	600	10	724 700 428	35.000	796	725	618	30	64	20	M27
	630	600	10	724 700 429	32.500	800	725	645	30	58	20	M27
	710	700	6	724 700 430	25.500	912	840	740	30	49	24	M27
	800	800	6	724 700 431	39.300	1026	950	843	33	58	24	M30
	900	900	6	724 700 432	48.500	1129	1050	947	33	62	28	M30

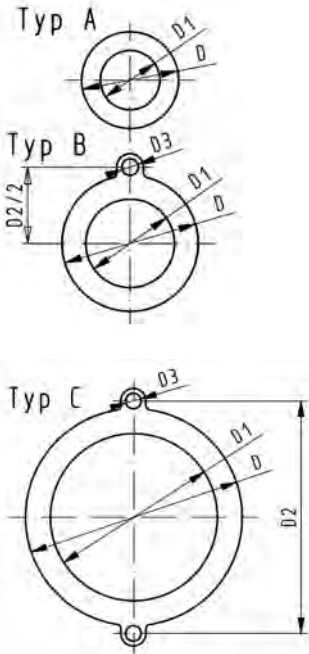


Flat gasket

Model:

- For all metric GF Flange Adaptors
- Hardness approx. 65° Shore
- Integrated fixation aids from d110
- Centering on the inner diameter of the screw crown

di FA are the suitable inner diameters of flanges adaptors



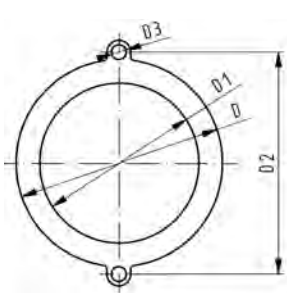
d [mm]	DN [mm]	PN [bar]	Type	EPDM Code	Weight [kg]	D [mm]	D1 [mm]	D2 [mm]	D3 [mm]	H [mm]	di FA [mm]	
16	10	10	A	748 400 305	0.004	46	16				2	6 - 26
20	15	10	A	748 400 306	0.012	51	20				2	10 - 30
25	20	10	A	748 400 307	0.004	61	25				2	15 - 35
32	25	10	A	748 400 308	0.008	71	32				2	22 - 42
40	32	10	A	748 400 309	0.013	82	40				3	30 - 50
50	40	10	A	748 400 310	0.016	92	50				3	40 - 60
63	50	10	A	748 400 311	0.018	107	63				3	53 - 73
75	65	10	A	748 400 312	0.029	127	71				3	61 - 81
90	80	10	A	748 400 313	0.035	142	84				3	74 - 94
110	100	10	B	748 400 314	0.051	162	104	180	18		4	94 - 114
125	100	10	B	748 400 315	0.044	162	119	180	18		4	109 - 129
140	125	10	B	748 400 316	0.068	192	134	210	18		4	124 - 144
160 - 180	150	10	B	748 400 317	0.090	218	155	241	22		4	145 - 165
200	200	6	C	748 400 319	0.210	273	195	295	22		5	185 - 205
225	200	6	C	748 400 320	0.140	273	216	295	22		5	206 - 226
250	250	6	C	748 400 321	0.210	328	250	350	22		5	240 - 260
280	250	6	C	748 400 322	0.151	328	273	350	22		5	263 - 283
315	300	6	C	748 400 323	0.237	378	305	400	22		5	295 - 315



Flat gasket for flange adaptor

Model:

- Hardness: EPDM ca. 70° shore
- Flange bolt circle: PN10
- Integrated fixation aids
- Centering on the inner diameter of the screw crown



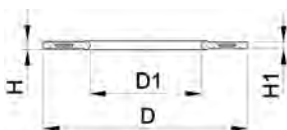
PN* [bar]	d [mm]	DN [mm]	EPDM Code	Weight [kg]	D2 [mm]	D3 [mm]	D1 [mm]	H [mm]	D [mm]
6	710	700	748 400 330	0.900	840	30	625	5	810
6	800	800	748 400 331	1.000	950	33	705	5	917
6	900	900	748 400 332	1.200	1050	36	805	5	1014
6	1000	1000	748 400 333	1.400	1160	39	890	5	1121



Profile flange gasket metric EPDM

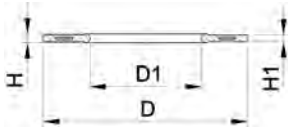
Model:

- Material: EPDM
- Profile gasket with steel insert
- Approval: ACS



d [mm]	DN	EPDM Code	D [mm]	D1 [mm]	H [mm]	H1 [mm]
40	32/40	748 442 709	82	40	4	3
50	40/50	748 442 710	92	46	4	3
63	50/60/65	748 442 711	107	58	5	4
75	60/65/80	748 442 712	116	77	5	4
90	80	748 442 713	142	84	5	4

table continued next page



d [mm]	DN	EPDM Code	D [mm]	D1 [mm]	H [mm]	H1 [mm]	
110	100	748 442 714	162	104	6	5	
125	100	748 442 715	162	123	6	5	
140	125	748 442 716	192	137	6	5	
160 - 180	150	748 442 717	218	160	8	6	
200	200	748 442 719	273	203	8	6	
225	200	748 442 720	273	220	8	6	
250	250	748 442 721	328	252	8	6	
280	250	748 442 722	328	274	8	6	
315	300	748 442 723	378	306	8	6	