

CORONA MWI

MULTI-JET METER | WET RUNNER

DIEHL
Metering



APPLICATION

Domestic water meter

FEATURES

- ▶ Modular multi-jet domestic meter with inductive scanning (without magnetic influence)
- ▶ System capability, with standard applicable pulse output 1 l/pulse (inductive). CORONA MWI can be externalized in any way - with IZAR RADIO COMPACT 868 I (radio module), IZAR PULSE I (pulse transmitter) or IZAR M-BUS COMPACT I
- ▶ Extremely low pressure loss and considerably extended measuring range
- ▶ Records very small amounts of water consumption
- ▶ Maximum long-term accuracy and absolutely corrosion-resistant
- ▶ Measuring data better than specified by calibration regulations
- ▶ Strainer insert in inlet connection for cleaning without damaging the seal
- ▶ Capable of withstanding any load for a short time
- ▶ Fine adjustment by regulating plug

CORONA MWI Meter for horizontal pipes

MULTI-JET METER | WET RUNNER

GENERAL

Meter for horizontal pipes		
Medium temperature range	°C	0.1 ... +30
Temperature safety	°C	0.1 ... +50
Ambient operating temperature	°C	0.1 ... +55
Ambient storage temperature	°C	0.1 ... +55
Nominal pressure	PN bar	16
Display range		0.05 ... 99,999 m ³
Protection class		IP 68

TECHNICAL DATA

Nominal diameter	DN	mm	15	20	25	25	25
Permanent flow rate	Q ₃	m ³ /h	2.5	4	4	6.3	10
Overload flow rate	Q ₄	m ³ /h	3.125	5	5	7.87	12.5
Transitional flow rate	Q ₂	l/h	40	40	40	100	100
Minimum flow rate	Q ₁	l/h	25 ¹	25 ²	25 ²	63 ¹	62.5 ²
Starting flow rate		l/h	4	4	4	6-8	6-8
Pressure loss at Q ₃		bar	0.36	0.47	0.47	0.6	0.6
Flow rate at 1 bar pressure loss		m ³ /h	4.19	5.85	6.5	12	12

Nominal diameter	DN	mm	25	32	40	50(40 ⁵)
Permanent flow rate	Q ₃	m ³ /h	10	10	16	16
Overload flow rate	Q ₄	m ³ /h	12.5	12.5	20	20
Transitional flow rate	Q ₂	l/h	100	100	256	256
Minimum flow rate	Q ₁	l/h	62.5 ²	62.5 ²	160 ¹	160 ¹
Starting flow rate		l/h	6-8	6-8	20-25	20-25
Pressure loss at Q ₃		bar	0.6	0.6	0.6	0.6
Flow rate at 1 bar pressure loss		m ³ /h	12	12	20	20

¹ based on dynamic R 100

² based on dynamic R 160

APPROVAL

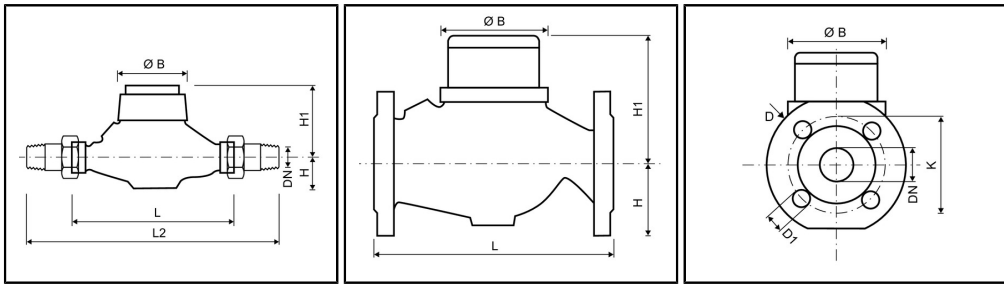
Nominal diameter	DN	mm	15	20	25	25	25
Permanent flow rate	Q ₃	m ³ /h	2.5	4	4	6.3	10
MID approval number			LNE 32390	LNE 32390	LNE 32390	TH-8814 / TH-8811	TH-8814 / TH-8811
Approval typ name			D3	D3	D3	D4 / Corona D4	D4 / Corona D4
Dynamic range horizontal installation (Q ₃ /Q ₁)	R		40 / 80 / 100	40 / 80 / 100 / 160	40 / 80 / 100 / 160	40 - 100	40 - 160
Dynamic range vertical installation (Q ₃ /Q ₁)	R		40	40	40	40	40

Nominal diameter	DN	mm	25	32	40	50(40 ⁵)
Permanent flow rate	Q ₃	m ³ /h	10	10	16	16
MID approval number			TH-8814 / TH-8811	TH-8814 / TH-8811	TH-8814 / TH-8811	TH-8814 / TH-8811
Approval typ name			D4 / Corona D4	D4 / Corona D4	D4 / Corona D4	D4 / Corona D4
Dynamic range horizontal installation (Q ₃ /Q ₁)	R		40 - 160	40 - 160	40 - 100	40 - 100
Dynamic range vertical installation (Q ₃ /Q ₁)	R		40	40	-	40

CORONA MWI Meter for horizontal pipes

MULTI-JET METER | WET RUNNER

DIMENSIONS



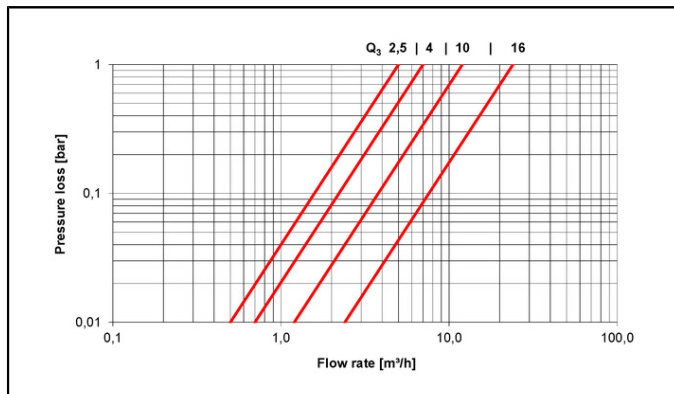
Nominal diameter	DN	mm	15	20	25	25	25
Permanent flow rate	Q ₃	m ³ /h	2.5	4	4	6.3	10
Overall length (DIN ISO 4064)	L	mm	165	190	175	260	260
Overall length with coupling ⁴	L2	mm	245	288	269	378	378
Connection thread on meter (ISO228/1)		inch	G3/4B	G1B	G11/4B	G11/4B	G11/4B
Connection thread of coupling (DIN 2999)		inch	R1/2	R3/4	R1	R1	R1
Flange diameter	D	mm	-	-	-	-	-
Hole circle diameter	K	mm	-	-	-	-	-
Screw hole diameter	D1	mm	-	-	-	-	-
Number of screwholes			-	-	-	-	-
Height	H	mm	33	37	49	44	44
Height	H1	mm	73	73	73	86	86
Diameter	ØB	mm	95	95	98	104	104
Weight without coupling		kg	1.3	1.4	1.8	2.08	2.8
Nominal diameter	DN	mm	25	32	40	50(40 ⁵)	
Permanent flow rate	Q ₃	m ³ /h	10	10	16	16	
Overall length (DIN ISO 4064)	L	mm	175	260	300	300	
Overall length with coupling ⁴	L2	mm	295	378	438	-	
Connection thread on meter (ISO228/1)		inch	G11/4B	G11/2B	G2B	-	
Connection thread of coupling (DIN 2999)		inch	R1	R11/4	R11/2	-	
Flange diameter	D	mm	-	-	-	165	
Hole circle diameter	K	mm	-	-	-	125	
Screw hole diameter	D1	mm	-	-	-	18	
Number of screwholes			-	-	-	4	
Height	H	mm	50	44	46	83	
Height	H1	mm	86	86	104	104	
Diameter	ØB	mm	88	104	137	137	
Weight without coupling		kg	2.1	3	5.4	10	

⁴ depend on version of coupling

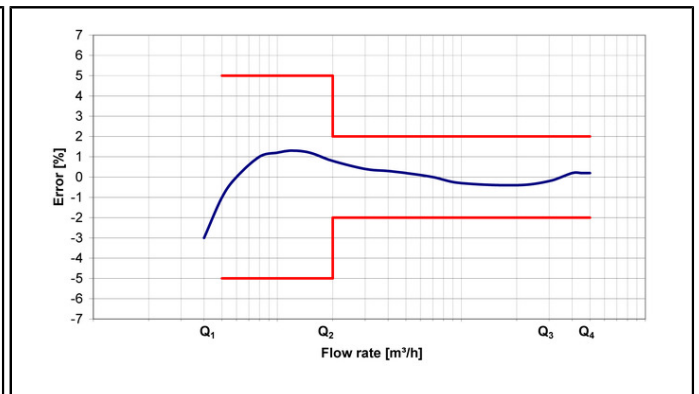
CORONA MWI Meter for horizontal pipes

MULTI-JET METER | WET RUNNER

PRESSURE LOSS GRAPH / TYPICAL ERROR GRAPH



Pressure loss graph



Typical error graph

CORONA MWI Meter for rising pipes

MULTI-JET METER | WET RUNNER

GENERAL

TECHNICAL DATA

Nominal diameter	DN	mm	25	40
Permanent flow rate	Q ₃	m ³ /h	10	16
Overload flow rate	Q ₄	m ³ /h	12.5	20
Transitional flow rate	Q ₂	l/h	100	256
Minimum flow rate	Q ₁	l/h	62.5 ²	160 ¹
Starting flow rate		l/h	6-8	20-25
Pressure loss at Q ₃		bar	0.6	0.6
Flow rate at 1 bar pressure loss		m ³ /h	12	20

1 based on dynamic R 100

2 based on dynamic R 160

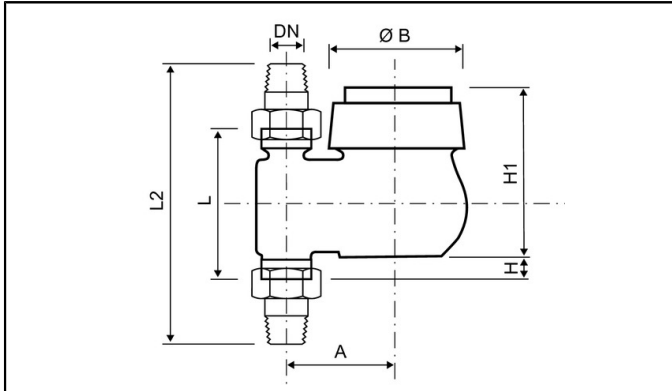
APPROVAL

Nominal diameter	DN	mm	25	40
Permanent flow rate	Q ₃	m ³ /h	10	16
MID approval number			TH-8814 / TH-8811	TH-8814 / TH-8811
Approval typ name			D4 / Corona D4	D4 / Corona D4
Dynamic range horizontal installation (Q ₃ /Q ₁)	R		40 - 160	40 - 100
Dynamic range vertical installation (Q ₃ /Q ₁)	R		40	-

CORONA MWI Meter for rising pipes

MULTI-JET METER | WET RUNNER

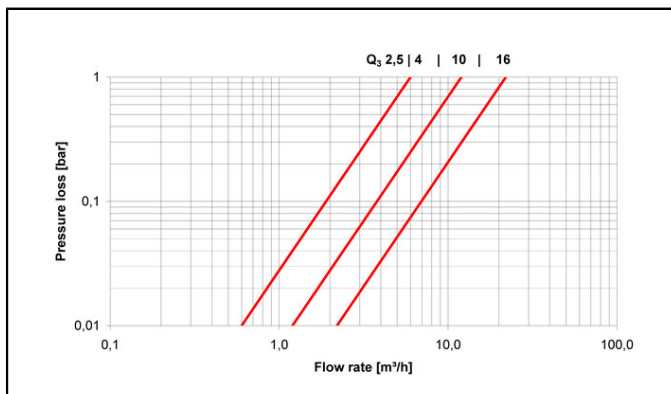
DIMENSIONS



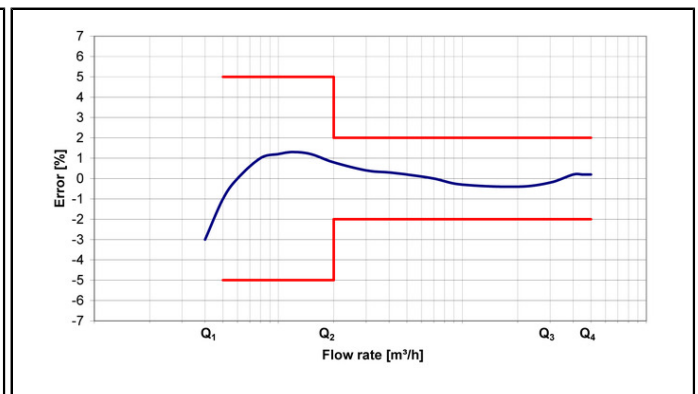
Nominal diameter	DN	mm	25	40
Permanent flow rate	Q ₃	m ³ /h	10	16
Overall length (DIN ISO 4064)	L	mm	150(135 ³)	200(150 ³)
Overall length with coupling ⁴	L2	mm	268	338
Connection thread on meter (ISO228/1)		inch	G11/4B	G2B
Connection thread of coupling (DIN 2999)		inch	R1	R11/2
Flange diameter	D	mm	-	-
Hole circle diameter	K	mm	-	-
Screw hole diameter	D1	mm	-	-
Number of screw holes			-	-
Height	H	mm	31	21
Height	H1	mm	130	147
Diameter	ØB	mm	104	136
Weight without coupling		kg	3.2	6.3

3 special overall length on request

PRESSURE LOSS GRAPH / TYPICAL ERROR GRAPH



Pressure loss graph



Typical error graph