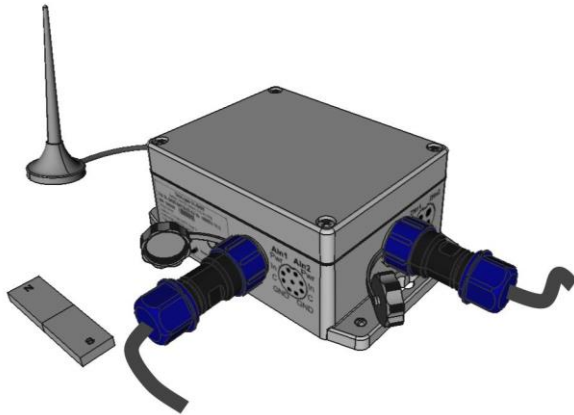


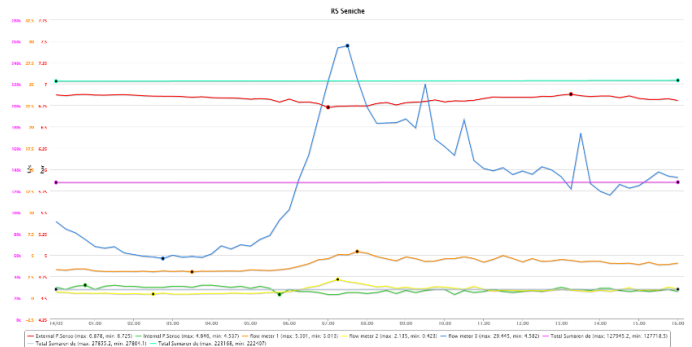
3G DATA LOGGER FOR MONITORING OF KEY POINTS IN WATER SUPPLY NETWORK MODEL: ZONE POINT



3G Data logger model: Zone Point is designed to work in hard conditions found in manholes. It features with IP68 which guarantees water tightness for 100 days under 1 meter of water. Remote communication and control is provided by the built-in 3G modem and the antenna. Data logger has low power consumption which guarantees battery life time for a period of minimum 5 years in case of standard working conditions – logging interval 15 minutes, one digital and one analogue inputs activated and data transmission two times per day. As an option device can be equipped with a battery with doubled capacity or to be connected to an external power source. Data logger features with 2 digital and 2 analog inputs and it can be upgraded with up to 2 internal pressure sensors. Data from the devices are available in a web-based platform for data visualization and preliminary analysis – QScada. In addition, all data can be automatically sent to a predefined server. Configuration of the logger is done remotely through web-based software for data management and analysis.

1. Applications:

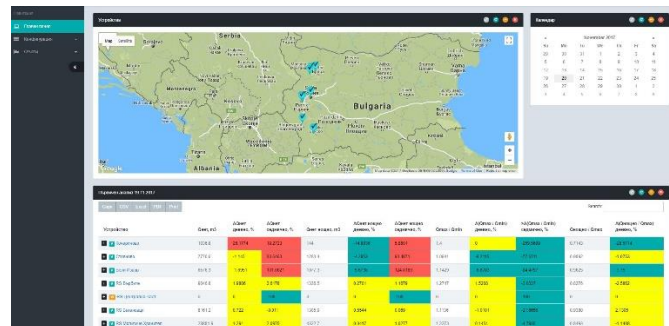
- District monitoring of flow and pressure at DMA entrance
- Pressure management at key points along water network
- Monitoring and control of pressure reducing valves
- Water level monitoring in reservoirs
- Logging and visualization of any digital and analogue signals



2. Visualization and access to the data:

Q SCADA & ANALYTICS is web based application for management and visualization of all data logged by the devices. Software provide an option for preliminary data analysis based on wide range of standard indicators with an option for development of own indicators with the integrated business intelligent tool. Based on pre-set alarms software automatically can send e-mail in case of a threshold passed. Access to the data is regulated with individual accounts. Q SCADA & ANALYTICS features with high level of data protection. Software is easy for use with user friendly menus

and orientation of all devices with GPS coordinates in google maps. All information can be downloaded in Excel, CSV, PDF or JPEG.



3. Technical specification

Digital inputs	2
Analogue inputs	2 x 4-20 mA
Power supply	Internal lithium battery with capacity 3,6V 13Ah and minimum lifetime of 5 years in case of a standard regime of work – logging interval 15 minute and data transmission two times per day.
Logging interval	1 second to 24 hours
Data transmission	Pre-set hours / Pre-set time interval / Time schedule
Water tightness	IP68 up to 100 days under 1 meter of water
Communication	3G with option NB-IoT
Antenna	Compact external antenna attached to the cover of the device with an option for an extension in case of a low coverage.
Configuration	Remote through web based software
Data access	With individual accounts in web based application or directly data transmission to e pre-set server