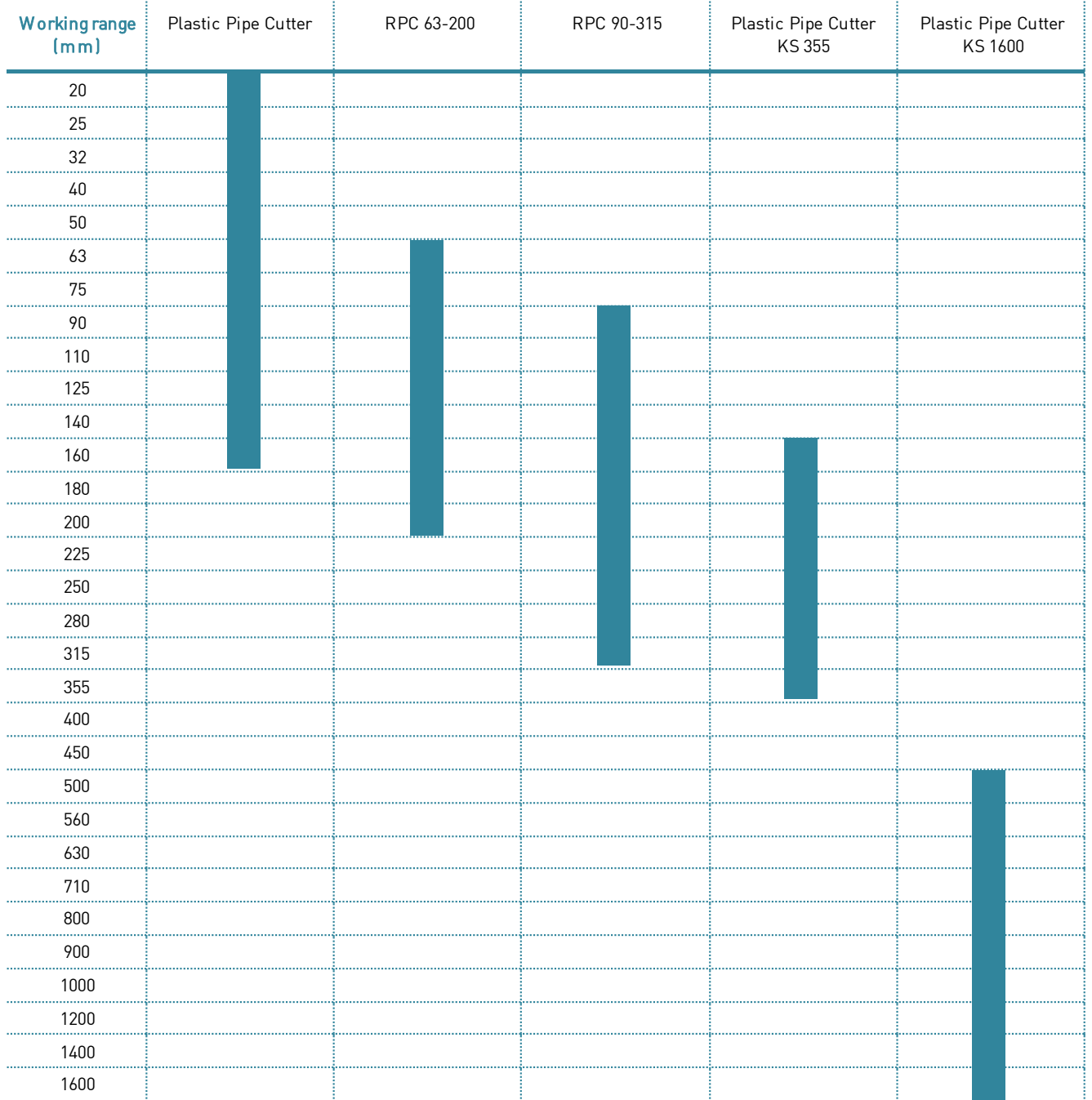


Utility Range Cutting Tools

Product Range Overview





Manual cutting tools

74



Electric cutting tools

75

Manual cutting tools



PPC Plastic pipe cutter

For cutting plastic pipes d10 - d160

d-d (mm)	Article	Code	Weight (kg)	Closest inch (inch)
10 - 63	PPC 63, s max. = 7.2mm	790 109 001	0.865	1/8 - 2
50 - 110	PPC 110, s max. = 12.7mm	790 109 002	1.624	1 1/2 - 4
110 - 160	PPC 160, s max. = 19.0mm	790 109 003	2.212	4 - 6



Replacement cutting wheels

For plastic pipe cutter

d-d (mm)	Article	Code	Weight (kg)
10 - 63	SR 63 max. s=7,2 mm	790 109 011	0.004
50 - 110	SR 110/160 max. s=12,7 mm	790 109 012	0.015
110 - 160	SR 160 max. s=19,0 mm	790 109 013	0.023



Rotary Pipe Cutter d63-200 mm

- Tool for simple right angle precision cutting of plastic pipe with a wall thickness up to 12 mm PVDF/PVC and up to 20 mm PP/PE --> blade for PP/PE must be ordered separately (Code 790109861)
- Including transport box

d-d (mm)	Code	Weight (kg)
63 - 200	790 109 850	7.000



Rotary Pipe Cutter d90-315 mm

- Tool for simple right angle precision cutting of plastic pipe with a wall thickness up to 15 mm PVDF/PVC and up to 30 mm PP/PE --> blade for PP/PE must be ordered separately (Code 790109861)
- Including transport box

d-d (mm)	Code	Weight (kg)
90 - 315	790 109 851	5.000



Knife for Rotary Pipe Cutter d63-200 and d90-315 for PP/PE pipe

d-d (mm)	Code	Weight (kg)
63 - 315	790 109 861	0.050

Electric cutting tools



KS 355 Plastic pipe cutter

- The KS 355 is the ideal tool for right-angled cuts with no misalignment of PE, PP and PVC pipes
- Pipe outer dimension from 160 – 355 mm, wall-thickness from 8 – 40 mm
- Unique clamping mechanism, no additional tools like belts, chains or reduction inserts necessary
- Weight of the saw: 13,0 kg
- Supplied with transport box: Dimension 700 x 350 x 500 mm; Weight 17,0 kg

d-d (mm)	Code	Weight (kg)	Power
160 - 355	790 202 001	35.000	1750 W; 230 V; 50/60 Hz



Plastic pipe cutter

- The easy handling and an optimal safety do make the saw indispensable on each construction site
- Motor hand-circular saw with chain guiding
- The machine consists of a motorized hand saw, with guide carriage and tensioning chain for each pipe diameter
- The tensioning chain is to be out around the pipe and tightened by means of the chain tensioner. The carriage is applied with the hand circular saw. The pipe is cut by moving the carriage around the pipe.
- A quick, clean and right angled cut is the result

The KS 1600 is used for cutting plastic pipes fast, cleanly and properly right-angled from diameter 500 mm up to 1600 mm with a wall thickness of max. 60 mm. For each pipe diameter, the appropriate chain length is necessary. The saw is to be put on the tensioned chain as per user manual which serves as a guiding device for the saw over a full 360° turn.

The guard plate covers the saw blade also during operation and provides full protection for the user at all times.

The KS 1600 basic kit consists of a circular-hand saw, 230 V / 2200 W with carriage, 2 tension chains for d560 mm and d630 mm as well as a chain tensioner. The whole equipment comes in a convenient and robust transport box.

The easy handling and the optimal safety features make this tool indispensable on every building site.

Scope of delivery:

1 Circular-hand saw, 1 tensioning chain d560 mm, 1 tensioning chain d630 mm, 1 chain tensioner, 1 hex-wrench size 5, 1 hex-wrench size 6, 1 operating instruction, transport-box

Technical data:

Dimension range:	d500 –1600 mm (In combination with the respective tensioning chain)
Plug:	EU-Plug
Voltage:	230 V AC
Power:	2200 Watt
Frequency:	50-60 Hz
Circular saw blade outer-Ø:	240 mm
RPM:	4100
Sound level:	104 dB (A)
Weight saw:	15, 5 kg
Weight KS 1600 Basic-Kit:	43,5 kg
Dimensions saw (WxHxD):	790 x 330 x 335 mm
Dimensions Transport-Box:	950 x 400 x 395 mm

d-d (mm)	Type	Code	Weight (kg)
500 - 1600	KS 1600 Basic Kit	790 109 600	43.000



Replacement saw blade Ø 180x30 for KS 355

Code	Weight (kg)
790 202 011	0.354



Replacement saw blade for KS 1600

description	Code	Weight (kg)
Saw Blade 250X3.5X3.0, 18 teeth punched	790 109 618	0.653



Tensioning Chains

- Chains for d560 and d630 mm are included in the scope of delivery of the KS 1600 Basic-Kit (790 109 600).

d (mm)	Code	Weight (kg)
500	790 109 605	5.200
560	790 109 606	5.600
630	790 109 607	6.630
710	790 109 608	7.900
800	790 109 609	9.100
900	790 109 610	10.100
1000	790 109 611	11.000
1100	790 109 612	12.000
1200	790 109 613	13.500
1400	790 109 614	15.500
1600	790 109 615	17.800



Chain tensioner

- Chain tensioner is included in the scope of delivery of the KS 1600 Basic Kit (790 109 600).

d-d (mm)	Code	Weight (kg)
500 - 1600	790 109 616	0.400

Tapping and Pressure testing tools

Tapping tools

Assembly and tapping key for saddles



- Combination tool for tapping and tightening of fixation screws.

Type	Code	Weight (kg)	Description
8/10/17	799 198 047	0.798	For all saddles

Tapping key for saddles



- With adjustable tapping depth.

Type	Code	Weight (kg)	Description
WS - 10	799 198 080	0.114	for Monobloc d 40 mm and d 50 mm
WS - 17	799 198 079	0.556	for Monobloc d 63 mm, d 90 - 160 mm and all Duobloc saddles
WS - 12.7	799 198 091	0.600	for spigot saddle with cutter

Tapping Adapter for saddles



- The Adapter is used for gas-free tapping under pressure. Type S 54 for tapping saddles with rotatable outlet d 20 - 40 mm (Tapping Tee d 32 mm). Type S 67 for tapping saddles with rotatable outlet d 50 - 63 mm (Tapping Tee d 63 mm).

Type	Code	Weight (kg)	Description
S 54	799 100 061	0.785	for Tapping Tee d 32 mm
S 67	799 100 062	1.011	for Tapping Tee d 63 mm

Hexagon key for saddles and branch fittings



- For tightening fixation screws.

Type	Code	Weight (kg)	Description
SW8	799 150 378	0.129	For all saddles and branch fittings

Hexagon key for PVC saddles



- The Hexagon Key is suitable for tapping water and gas mains under pressure.
- Scope of delivery: 1 hexagon key, protective cover, without rotating pin.

d-d (mm)	Code	Weight (kg)	s (mm)	G (inch)
32 - 40	799 150 008	0.496	27	38
50 - 63	799 150 009	0.690	27	47



Cutter for PE pipes

- This cutter is suitable for PE pipes and can be used on pipes of up to d 225 mm with a wall thickness of up to 21 mm.

d (mm)	Code	Weight (kg)	Description
39	799 198 012	0.215	accessories Basic Tool Box



PE repair plug

- PE Repair Plugs are suitable for use with ELGEF Plus Repair Saddles

d (mm)	Code	Weight (kg)
39	799 199 089	0.019



Core cutter set for PE pipes

- Suitable for drilling of pressureless PE pipes
- Set includes core cutter, centre drill, adapter SDS max, ejector rod and transport box
- Suitable for branch saddle with spigot outlet (193135202 - 748)
- Core cutter is especially developed for plastic material
- Enables quick drilling
- Cutout stays in the core cutter

Technical information: **Core cutter:** L = 300 mm; d= spigot outlet fitting in mm; d1= spot boring diameter in mm; Max. wall thickness = 120 mm, **Pilot drill:** d = 14mm; L = 400 mm, **Ejector rod:** d = 12mm; L = 500 mm, **Connection drill machine:** SDS max, **Connection core cutter:** G 1/2" (female thread) d160, 225, 315; G 1 1/4" (female thread) d500, **Machine suggestion:** Effective power minimum 100 watt; Rotation speed 100-200 rpm

d (mm)	d1 (mm)	Code	Weight (kg)	Description
160	123	799 198 101	7.200	Core cutter set in transport box
225	172	799 198 102	10.000	Core cutter set in transport box
315	238	799 198 103	13.400	Core cutter set in transport box
500	420	799 198 104	34.000	Core cutter set in transport box



Transport box for Core cutter set

- Suitable for core cutter set (799198101 - 104)

d (mm)	Description	Code	Weight (kg)
160	Transport box 160; 565x170x180mm	799 198 121	3.900
225	Transport box 225; 565x220x230mm	799 198 122	4.700
315	Transport box 315; 280x280x565mm	799 198 123	7.500
500	Transport box 500; 465x465x565mm	799 198 124	9.000



Drill stand for Core cutter set

- Suitable for safe and guided drilling of pressureless PE pipes
- Set includes drill stand, drilling machine, extension arm and standtracks
- Suitable for branch saddle with spigot outlet (193135402 - 748)
- Suitable for core cutter set (799198101 - 104)
- Tension belts for the fixation of the drill stand onto the PE pipe are not included in scope of delivery
- Use of Core cutters 160/225/315 requires additionally adaptor 1 1/4" - 1/2" (799198138)
- In case of using the pilot drill for core cutters 160/225/315 adaptor 1/2"M - 1/2" F (799198106) is required

Description	Code	Weight (kg)
Drill stand BS400 with vulcanised-rubber bonded standtracks. Extension arm suitable for branch saddle 4-drift drill machine D38-BB	799 198 137	68.000



Accessories for Core cutter set

- Suitable for core cutter set (799198101 - 104)

Description	Code	Weight (kg)
Pilot drill d = 14mm; L = 365 mm	799 198 133	0.300
Ejector rod d = 12mm; L = 500 mm	799 198 131	0.450
Adaptor 1 1/4" UNC-R- 1/2"	799 198 138	0.520
Adaptor drill chuck 13	799 198 105	0.160
Adaptor thread	799 198 106	0.180
Adaptor SDS-max	799 198 107	0.300

W410 drilling device (3/4" - 8")



Basic Drilling Device W410 including ratchet (all accessories to be added)

Model:

- Including: hex key 3 mm, hex key 6 mm and screwdriver

Description	Code	Weight (kg)
basic device including ratchet	709 700 100	7.800



Drill shafts

Model:

- Drill shafts to be selected depending on build up length of your configuration

Description	Code	Weight (kg)
drill shaft 620 mm	709 700 010	1.200
drill shaft 775 mm	709 700 021	1.500
drill shaft 1070 mm	709 700 023	2.070



Mandrel combined with pilot drill

Model:

- mandrel including special pilot drill 6mm with dual retention wires

Description	Code	Weight (kg)
hole saw mandrel 9/16 inch - 1 3/16 inch with retain pilot drill	709 701 260	1.000
hole saw mandrel 1 1/4 inch - 6 inch with retain pilot drill	709 701 261	1.000



Flange adaptors

Model:

- Suitable for flange to flange connections
- Not included flange bolts / gasket
- Flange adaptor for W410
- Suitable for MULTI/JOINT® flange adaptor / connection to PE spigot

Description	Drilling pattern	Code	Weight (kg)
flange adaptor DN50	PN16	709 702 045	1.850
flange adaptor DN65	PN16	709 702 046	2.250
flange adaptor DN80	PN16	709 702 047	3.090
flange adaptor DN100	PN16	709 702 048	3.840
flange adaptor DN150	PN16	709 702 050	6.530
flange adaptor DN200	PN10	709 702 051	8.800



Pilot drill

Model:

- pilot drill 6 mm with dual retention wires

Description	Code	Weight (kg)
pilot drill 6 mm with dual retention wires	709 800 006	0.010



Cup drill

PE chipless Ø45, Ø60, Ø63, Ø80 and Ø84 mm

Model:

- Maximum PE pipe d630 SDR11
- Suitable for under pressure drilling
- Push rod for coupon release out of the cup drill
- For demanding drillings on PE

Description	Code	Weight (kg)
PE cup drill chipless 45 mm x 60 mm	709 810 410	0.510
PE cup drill chipless 60 mm x 60 mm	709 810 412	0.580
PE cup drill chipless 63 mm x 60 mm	709 810 414	0.590
PE cup drill chipless 80 mm x 60 mm	709 810 415	0.880
PE cup drill chipless 84 mm x 60 mm	709 810 416	0.910
PE cup drill chipless 45 mm x 120 mm	709 810 420	0.800
PE cup drill chipless 60 mm x 120 mm	709 810 422	0.890
PE cup drill chipless 63 mm x 120 mm	709 810 424	0.890
PE cup drill chipless 80 mm x 120 mm	709 810 425	1.340
PE cup drill chipless 84 mm x 120 mm	709 810 426	1.370
PE cup drill push rod	709 700 024	0.400



Heavy duty transport / storage box for W410 drilling device

Model:

- Outside dimension transport / warehouse box: 120 x 40 x 40 cm

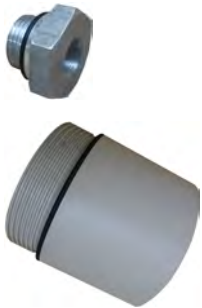
	Description	Code	Weight (kg)
	Heavy duty transport / storage box for W410 drilling device	709 706 414	15.500

Pressure test cap for Tapping saddles



- The cap has a Rp 3/8" connection thread and is made from galvanised steel.
- **Overview of Tapping Adapter types and Pressure Test Cap**
- M For Monobloc d 40 and 50 mm (outlets d 20 - 32 mm)
- S 54 For all saddles with rotatable outlet (outlets d 20 - 40 mm) i.e. Tapping Tee d 20 - 40 mm.
- S 67 For all Saddles with rotatable outlet (outlets d 50 and 63 mm) i.e. Tapping Tee d 63 mm.

Type	Code	Weight (kg)	Description
M	799 199 282	0.116	for Monobloc d 40 mm and d 50 mm
S 54	799 199 283	0.260	for Tapping Tee d 20 - 40 mm
S 67	799 199 286	0.430	for Tapping Tee outlet d 63 mm
MB	799 199 287	0.037	for Monobloc d63-160 mm and Branch saddle outlet d160/225 mm



Pressure Test Cap

- Enables pressure testing of branch saddles ELGEF Plus after fusion and before tapping the main pipe
- Suitable for branch saddle with spigot outlet (193435402- 748 and 193135202- 304)
- Recommended maximum test pressure at +20°C according DVS 2210-1 = 18 bar water (SDR11) / 11 bar water (SDR 17)
- Recommended test duration = 60 minutes
- Connecting thread for pressure test is female thread G 3/8"

d (mm)	Code	description	L (mm)	B (mm)	H (mm)
160 - 225	799 199 287	Suitable for branch saddle with spigot outlet d160 and d225mm and Tapping saddles Monobloc main dimension d63-160mm; Material: Aluminum; Scope of delivery: 1 x Pressure test cap, 1 x O-ring 25.07 x 2.62	26	36	39
315	799 199 288	Suitable for branch saddle with spigot outlet d315mm; Scope of delivery: 1 x pressure test cap, 1 x O-Ring, 1 x GEKA-plus hose nipple, 1 x GEKA-plus transition female thread G3/8", 1 x Transport box	310	310	320
500	799 199 289	Suitable for branch saddle with spigot outlet d500mm; Scope of delivery: 1 x pressure test cap, 1 x O-Ring, 1 x GEKA-plus hose nipple, 1 x GEKA-plus transition female thread G3/8", 1 x Transport box	465	465	400